

Fleetwood-Bawden ELEMENTARY SCHOOL

End of September Newsletter



A MESSAGE FROM THE OFFICE:

We are off to a great start. Fleetwood staff have been enjoying connecting with students these first days. Our school was very pleased to see so many families join us at our Meet the Teacher BBQ. As you may have noticed, staff have been getting to know each student and have been planning lessons to engage all learners. We are so excited for what the 2023-2024 school year will bring!



All parents and guardians must have access to the following programs:

PowerSchool - to ensure you have access your child's report card

Safe Arrival - to report lates and absences

School Cash Online - to make any school payments

These are division programs used by all schools in Lethbridge School Division. (EEP to Grade 12) Information has been emailed to you with instructions on how to access these programs. **If you need the instructions resent, please email fleetwood@lethsd.ab.ca. If you are having difficulties accessing the sites, please email the same address and request support.** Someone will reach out to you to help you set up these programs. We are here to help!

Important Dates in September

Sept 8 Thank you for your support. Our *Toonies for Terry* campaign raised over \$800 for cancer research!

Sept. 18/19 Junior and Senior Choir begins. Information was sent directly to participants.

Sept 25 FUNDRAISING INFORMATION sent home.

Sept. 25 School Photo Day for students in M/W Kinder and Montessori

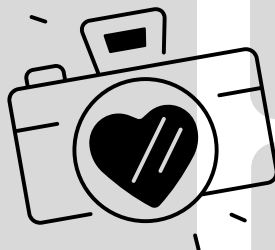
Sept 26 School Photo Day for students in EEP, T/Th Kinder and Mainstream

Please be aware Lifetouch is no longer providing a class picture to all families. They will be available for you to purchase.

Sept. 27 Parent Council Meeting 7:00 Fleetwood Staff Room. Please join!

Sept 29 Orange Shirt Day. We encourage you to wear an orange shirt if you have one.

Sept. 30 National Day for Truth and Reconciliation.



AUTUMN is here

Bell Times

Warning Bell 8:30

Start Time 8:35

Dismissal M-Th 3:35

Dismissal Friday 12:35

We have high expectations about attendance and being on time for school

Universal Breakfast and Lunch Programs have started.

Please stay connected!



Fleetwood-Bawden
ELEMENTARY SCHOOL

WEBSITE

fb.letbsd.ab.ca



ClassDojo

Connect with your child's teacher for more information.

Follow us!



ROUND-ABOUT and PARKING LOT

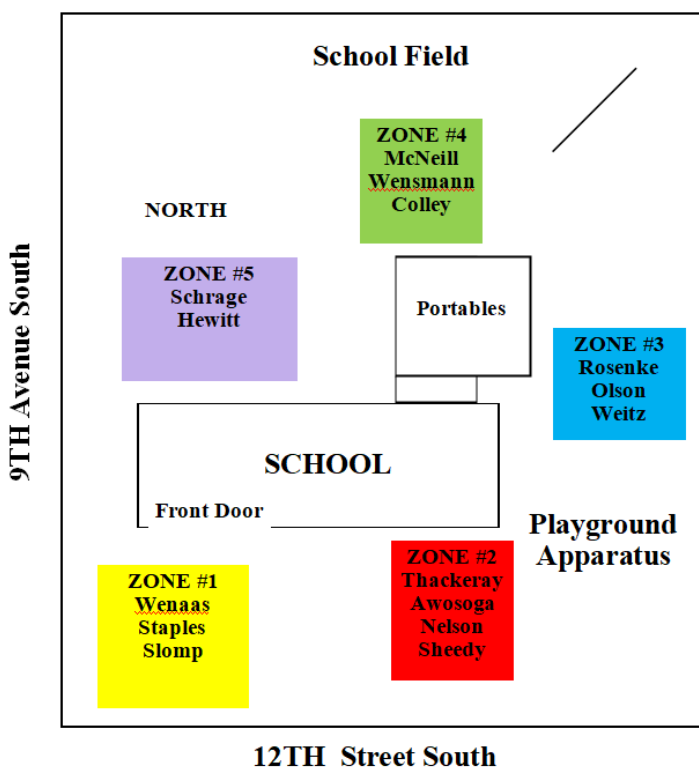
- Thank you for not parking in our round-about and staff parking lot.
- We appreciate drivers using our round-about as a quick drop off area.
- We encourage early arrivers to park further away from the school, then enter the drop off zone when you are ready to drop off your children. This will allow for smooth traffic to flow.
- Thank you for keeping the last spot in the round-about (near the shed) for our EEP Buster Bus to safely drop off our youngest learners.
- To avoid theft and to ensure safety, please lock your doors.
- Please lock bikes in new bike racks!

STREET PARKING

- Bus parking is in front of the school along 9th Avenue. Please do not park in bus zones.
- Please adhere to the signs and do not leave your car unattended in the drop-off zone. Parking on the east side of 12th Street causes major congestion. Please adhere to the parking signs.

thank you

Pick-up and Drop off Zones



Just a reminder students are to use the proper door at the beginning and end of the day.

Please ensure students K-5 **arrive at 8:30**. This allows students enough time to enter the building, change shoes, hang coats and backpacks, go to the washroom and fill water bottles.

Staff open the doors at the 8:30 warning bell. Students are welcomed in and then doors are immediately locked for safety.

All late learners are asked to enter through the front door.